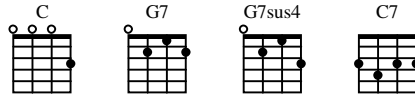


TNC

As recorded by Troy Fernandez

(From the 2005 Album HAWAIIAN STYLE)

Transcribed by Dominator
Tune Ukulele GCEA



A Intro

$\text{♩} = 176$

G7

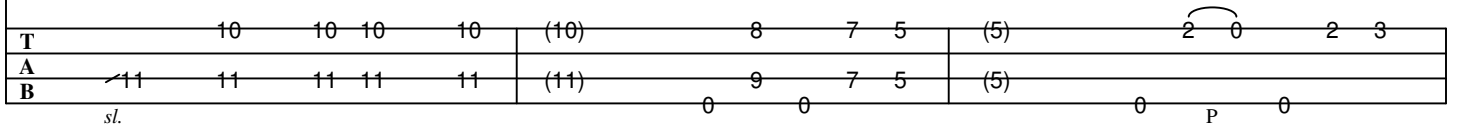
8va-----

8va---

8va-----



Gr I

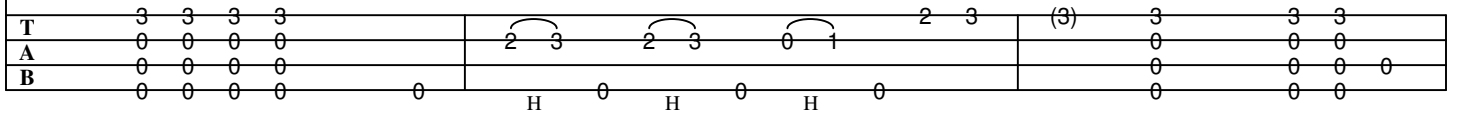


C

8va-----

G7

C

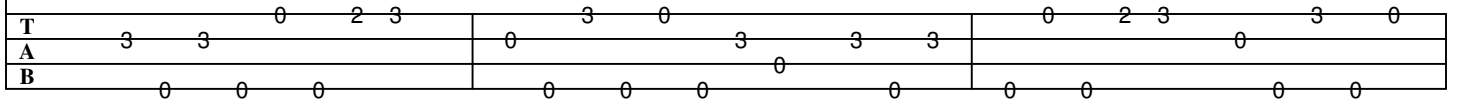


B Section A

$\text{♩} = 140$

C

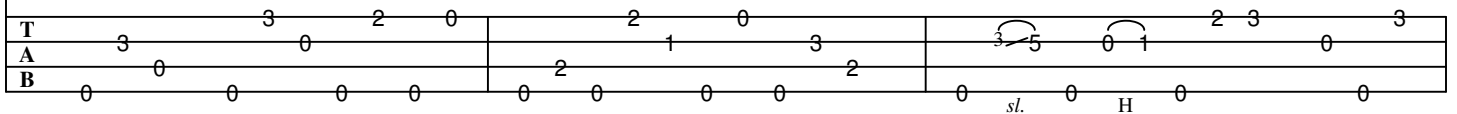
8va-----



8va-----

G7

C



8va----- G7 C G7sus4 C

13

T 0 3 2 3 2 3 0 1

A 3 0 0 0 0 0 2 0

B 0 0 0 0 0 0 0 0

H H H

C Section A1

C 8va-----

15

T 3 3 0 2 3 0 3 0 3 3 0 2 3 0 3 0

A 0 0 0 0 0 0 0 0 0 0 0 0 0 0 0

B 0 0 0 0 0 0 0 0 0 0 0 0 0 0 0

8va----- G7 C

18

T 3 0 2 0 2 1 0 3 2 3 5 0 1 2 3 0 3

A 3 0 0 0 0 0 0 0 0 0 0 0 0 0 0 0

B 0 0 0 0 0 0 0 0 0 0 0 0 0 0 0 0

sl. H

8va----- G7 C G7sus4 C

21

T 0 3 2 3 2 3 0 1 2 3 3 3 3 3

A 3 0 0 0 0 0 0 0 0 0 0 0 0 0

B 0 0 0 0 0 0 0 0 0 0 0 0 0 0

H H H

D Section B

C 8va-----

23

T 7 3 7 8 7 5 3 0 3 7 3 7 (7) 8 7 0 5 0 3 0 0

A 3 5 3 5 4 3 3 5 7 0 5 0 3 0 0 3

B 0 0 0 0 0 0 0 0 0 0 0 0 0 0 0 0

P P P

G7 C
8va-----

26

T 5 5 7 5 | 3 2 0 3 3 5 0 1 | (1) 2 3 0 3 0 3

A 3 3 5 0 | 0 0 sl. 0 H 0 0 0 0 0 0

B 4 4 4 4 | 0 0 0 0 0 0 0 0 0 0 0 0

E Section B1

G7 C G7sus4 C C
8va-----

29

T 2 3 2 3 0 1 2 3 3 | (3) 3 3 3 | (3) 3 3 3

A 0 0 0 0 0 0 0 0 0 | (0) 1 1 0 | (0) 1 1 0

B H 0 H 0 H 0 0 0 | (0) 0 0 0 | (0) 0 0 0

8va----- G7

32

T 1 0 2 3 3 | 3 0 3 0 3 0 0 | 1 1 7 7 7

A 2 0 3 4 3 | 0 0 0 0 0 0 0 | 2 2 7 7 7

B 0 0 0 0 0 0 0 0 0 | 0 0 P 0 P 0 P 0 0 | H 0 2 2 7 7 0 7

8va----- C G7 C G7sus4 C

35

T 5 3 2 3 2 1 0 | (0) 3 3 0 3 0 0 2 2 3 3 | (3) 3 3 3

A 5 4 3 4 3 2 0 | (0) 0 0 3 0 0 1 0 0 0 | (0) 1 1 0

B 0 0 0 0 0 0 0 | (0) 0 0 P 0 P 0 H 0 H 0 H 0 0 | (0) 2 2 0

F Section B2

C 8va----- 8va----- 8va----- 8va-----

39

T 6 7 6 7 6 7 6 7 7 0 5 0 3 0 3 3

A 6 7 6 7 6 7 6 7 8 7 6 7 6 7 0 0 0

B sl. 0 0 sl. 0 sl. 0 sl. 0 0 7 6 7 6 7 0 0 0 P 0 P 0 P 0

42

G7 8va----- C G7

T 4-5 4 5 5 3 2 0 3 1 0 1 0 3 0

A 2-3 2 3 5 3 2 0 3 1 0 1 0 3 0

B 0 0 0 0 0 0 0 0 0 0 0 0 0 4 4

sl. 0 0 0 0 0 0 0 H P 0 sl.

[G] Section B3

45

C G7sus4 C C

T 3 3 (3) 3 3 3 10 10 12 10 8 7

A 2 1 0 0 0 (0) 1 1 0 12 12 12 10 8

B 0 0 0 0 0 (0) 0 0 0 0 0 0 0 0

48

8va----- 8va----- G7 8va-----

T 8 10 12 10 12 (12) 10 0 8 0 7 0 8 8 10 8 7 5

A 8 12 10 12 (12) 10 0 8 0 7 0 8 10 12 10 8 7

B 0 0 0 0 0 0 P 0 P 0 P 0 7 0 0 0 0

51

8va----- C G7 C

T 3 2 3 5 0 1 2 (2) 3 3 0 3 2 3 2 3 0 1 2 3 3

A 5 3 3 5 0 1 2 (2) 3 0 3 2 3 2 3 0 1 0 0

B 0 0 sl. 0 H 0 0 0 0 0 0 H 0 H 0 H 0 0

[S] Section B4

54

8va----- C 8va-----

T 3 15 15 17 15 12 10 (10) 15 15 17

A 0 12 12 13 12 (12) [12] 12

B 0 0 0 0 0 0 [12] 0 0 0

N.H.-1

8va-----

G7 8va-----

57

T 15 0 12 0 10 0 [12] 14 14 12 10 8 8 7 5 5 3 2

A [12] 15 14 12 10 8 7 7 5 3

B 0 P 0 P 0 P 0 0 0 0 0 0 0 0 0 0

C 8va----- G7 8va----- C7 8va

60

T 3 3 0 3 2 3 2 3 0 1 2 3 1 2 3

A 0 0 3 2 3 2 3 0 1 1 2 3 2 3 4

B 0 0 0 0 H 0 H 0 H 0 2 3 4 3

TNC Performance Notes

Song Specific Performance Notes

TNC, from Troy Fernandez's CD "Hawaiian Style" provides a great foundation for learning a variety of Hawaiian style licks. This is actually the first Hawaiian style song I have learned. Troy Fernandez shows why he is considered one of the most accomplished ukulele players in the Hawaiian music scene today. The entire song is centered in the key of C major. The intro starts on G7 (the V7 of the C major scale) and then moves into C major. This is a great song to play with another ukulele or even an acoustic guitar. The only slight challenge for the rhythm is the fact that the number of measures the G7 is played varies on many of the passes through the progression. Paying close attention to the melody will help in making the changes at the correct time.

My recommendation for learning the melody is to just take it a few measures at a time. Play each measure very slowly and gradually increase the tempo until you are comfortable playing along with the recording. I know I have said this before but it really isn't as difficult as it may first seem.

I have elected to complete the transcription at the end of Section B4 by ending on a C7 chord, which is typical for this type of song. On the recorded version instead of playing the C7 Troy hangs onto the G7 and just continues to vamp out with licks that are all being played over the G7 chord. This continues and eventually fades. I leave this for you to use your creative juices to experiment with your solos over the G7. As always, the most important thing is to have fun!

General Performance Notes

Keep in mind that the tablature is just a guideline. I try to transcribe the parts as close as I can to the original recording, however, that doesn't mean that I play them exactly as written. It is hard to duplicate the exact strums that the player is using so I get something close and go from there. The main reason I transcribe is to learn the song and have a permanent reference to make it easier to learn the song again after I have forgotten it months later. I find it very helpful to follow along in the tab while listening to the recording several times before actually attempting to play the song. This gets you familiar with the tab as it relates to the recording.

Tablature can be intimidating to some people. Here is a tip I realized one day. Playing some of the individual fret numbers seemed awkward and uncomfortable until I noticed that they came from within the "**shape of the chord**". So whenever possible fret the chord and then play the other notes from within the chord. This should eliminate some moving around and make things a bit easier.

Above all else, have fun and if you have any questions feel free to contact me at dominic@rcsis.com
<http://www.ukeland.com/~dominator>